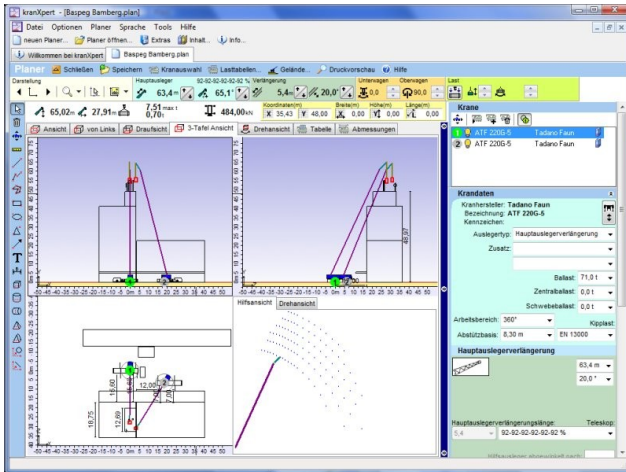


kranXpert

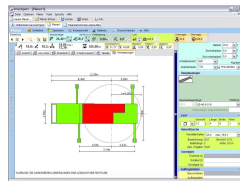
The Crane Job Planner for ALL !

KranXpert supports you on your crane job lift planning. You do not need to be a CAD-Professional in order to be able to draw obstacles or buildings.



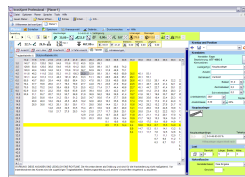
3-Tafel Ansicht

The crane job as such does become easily visual through the 'View' projection (front, left and the top) and with the rotation view (the view rotate around the crane).



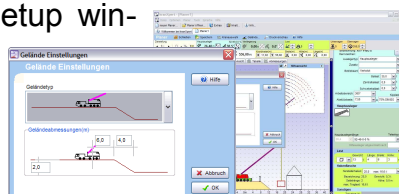
Crane dimensioning

It also exist the possibility to view the crane lift in the load chart table or to print out a crane dimensioning paper with the outrigger positions.



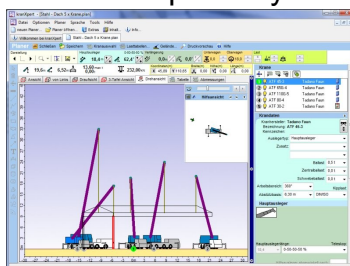
Load chart view

In the terrain setup window you can select from different terrain types.

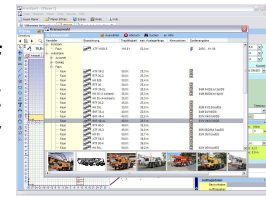


Terrain setup

With kranXpert you can insert several cranes to the view, to illustrate optionally tandem lifts or set cranes on different locations for other crane lifts on the project.



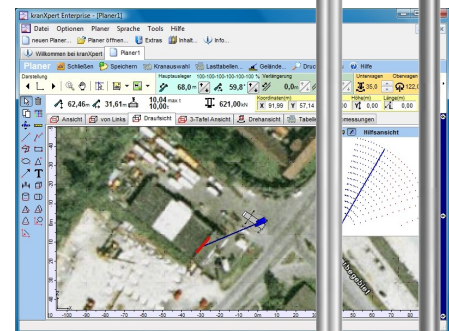
For kranXpert exists a big collection of cranes from different crane manufacturer from there crane flyers.



Crane selection

You can easily import the cranes to kranXpert and insert it as a fleet crane for fast crane selection or leave them in the crane database.

The following 2D drawing tools are available for you: tape measure, line, polygon, closed polygon, rectangle, ellipse, triangle, text and dimensions. To make the process even more efficient, you may above select the following 3D drawing tools: cube, cylinder, pyramid, sphere/oval, cone and the 3D-line.



The advantage of the 3D drawing tools is that these also become visible within the other views, means if you draw e. g. a cube in the base view it turns up in the others.

Features:

- ◆ Integrated project management
- ◆ Assistant for project and crane selection
- ◆ Insert ground plan graphics
- ◆ Uncomplex planning with multiple cranes
- ◆ Crane import with open XML format
- ◆ Input own cranes or import more than 500 crane types

Requirement:

- ◆ Windows 2000 / XP / Vista / Windows 7
- ◆ Screen > 1024x768-16, 96 dpi
- ◆ CPU: > Pentium 400
- ◆ RAM: > 128 MB
- ◆ Harddisc: > 50 MB
- ◆ Internet connection for activating.

Homepage: <http://www.kranXpert.com>

Email: info@kranXpert.de

